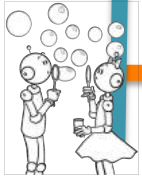




--	--	--	--	--	--	--	--	--	--	--



--	--	--	--	--

--	--	--	--	--





10

11

12

13

14

15

16

17

18

19

20



10

11

12

13

14

15

16

17

18

19

20



10

11

12

13

14

15

16

17

18

19

20

A horizontal row of 11 orange rounded squares, each containing a white number. The numbers are 10, 11, 12, 13, 14, 15, 16, 17, 18, 19, and 20, arranged from left to right.

A horizontal row of 11 orange rounded squares, each containing a white number. The numbers are 10, 11, 12, 13, 14, 15, 16, 17, 18, 19, and 20, arranged from left to right.

A horizontal row of 11 orange rounded squares, each containing a white number. The numbers are 10, 11, 12, 13, 14, 15, 16, 17, 18, 19, and 20, arranged from left to right.

10 11 12 13 14 15 16 17 18 19 20

A horizontal row of 11 orange rounded squares, each containing a white number from 10 to 20. The numbers are: 10, 11, 12, 13, 14, 15, 16, 17, 18, 19, 20.

A horizontal row of 11 orange rounded squares, each containing a white number. The numbers are 10, 11, 12, 13, 14, 15, 16, 17, 18, 19, and 20, arranged from left to right.

10 11 12 13 14 15 16 17 18 19 20

20 21 22 23 24 25 26 27 28 29 30

20 21 22 23 24 25 26 27 28 29 30

20 21 22 23 24 25 26 27 28 29 30

20 21 22 23 24 25 26 27 28 29 30

20 21 22 23 24 25 26 27 28 29 30

20 21 22 23 24 25 26 27 28 29 30

2

3

4

5

6

2

3

4

5

6

2

3

4

5

6

2

3

4

5

6

2

3

4

5

6

2

3

4

5

6

2

3

4

5

6



20

21

22

23

24

25

26

27

28

29

30



20

21

22

23

24

25

26

27

28

29

30



20

21

22

23

24

25

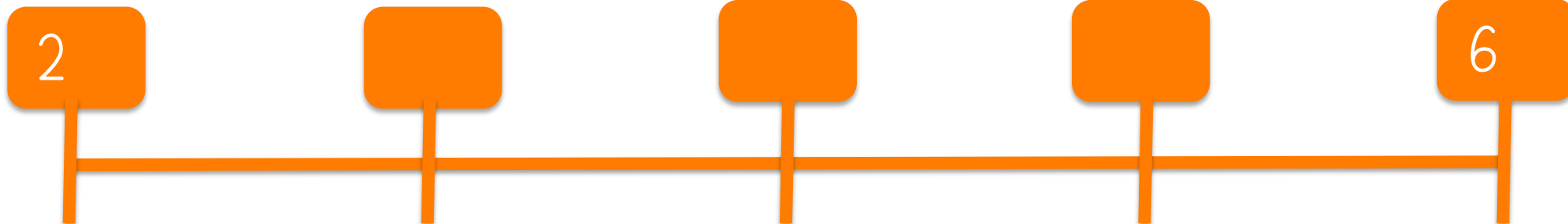
26

27

28

29

30





2

3

4

5

6



2

3

4

5

6



2

3

4

5

6





2

6



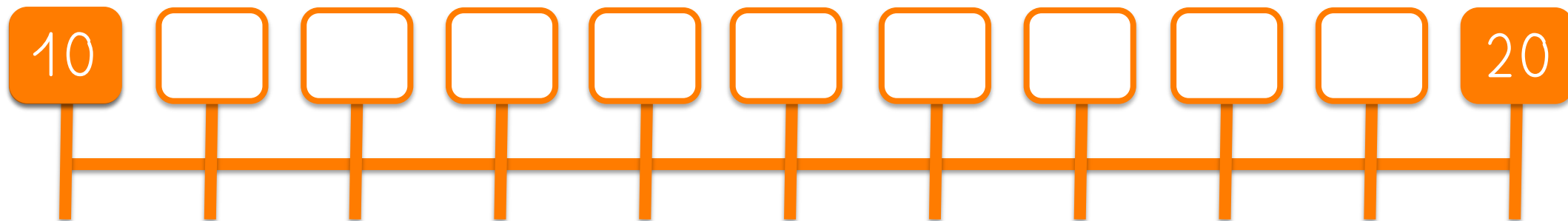
2

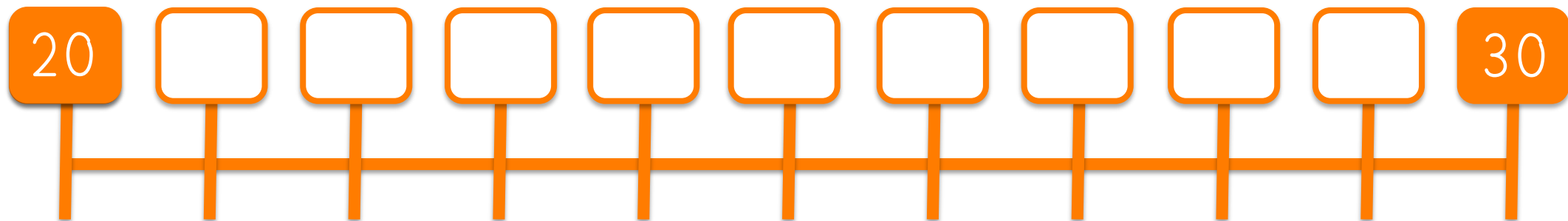
6



2

6







10

20



10

20



10

20



20

30



20

30



20

30



